



Energy Through People

Skilled Workforce Solutions

For Your Industry

ABOUT ETP

COMPLETE PROJECT SOLUTION

104

PROJECTS
COMPLETED

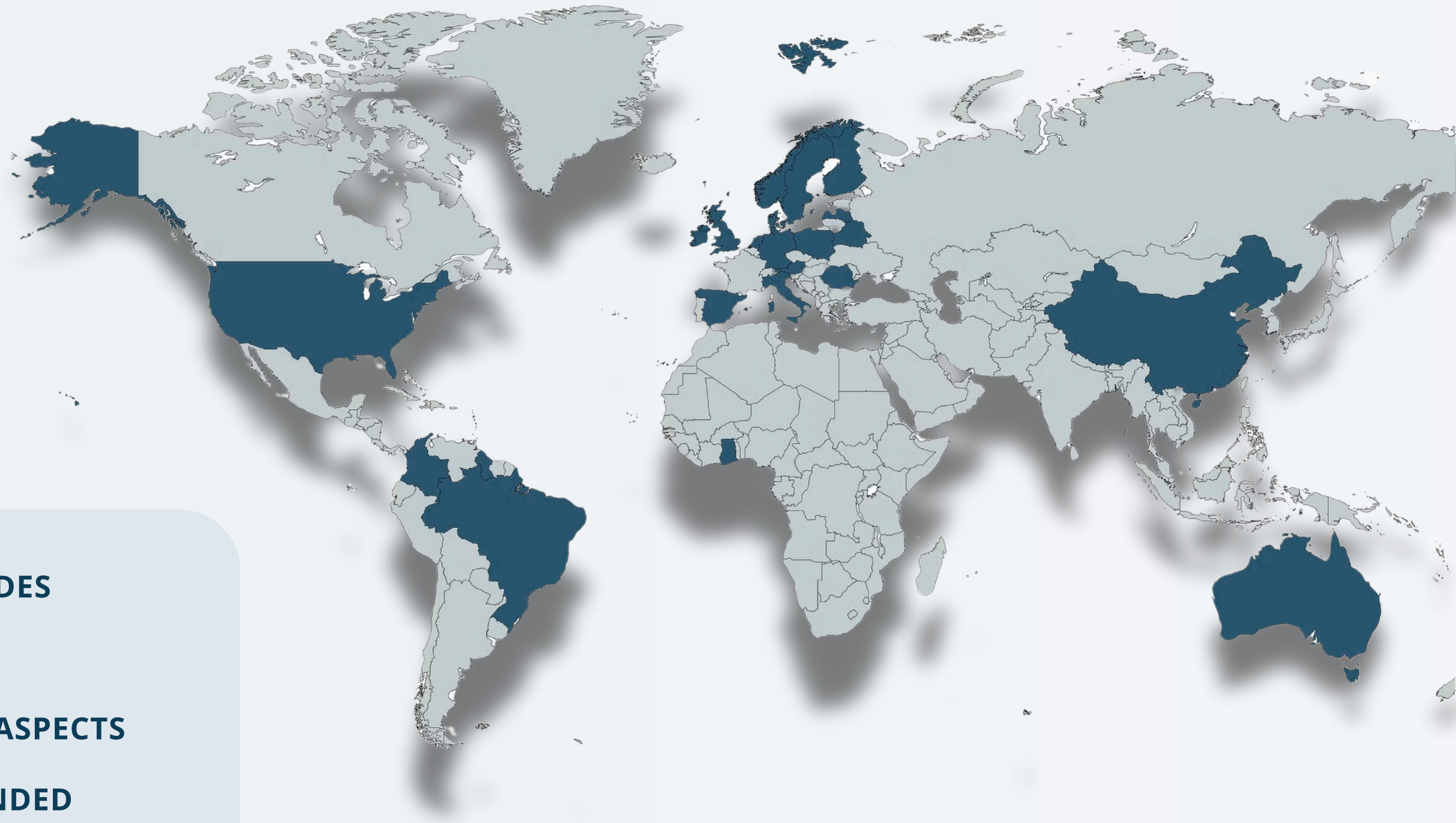
17+

YEARS OF
EXPERIENCE

3200

CREWS
MOBILIZED

THROUGHOUT VARIOUS INDUSTRIES, ETP PROVIDES MARKET-LEADING MANPOWER SOLUTIONS. OUR RELIABLE SUPPORT TO OUR CUSTOMERS IN ALL ASPECTS OF THEIR PROJECT REALIZATION HAS BEEN FOUNDED UPON QUALITY OF SERVICE, INTEGRITY AND ABSOLUTE COMMITMENT TO DELIVERY.



COMPETITIVE ADVANTAGE



EXPANDING DATABASE

consists of 1800+ active professionals (updated weekly)



EXPERIENCE & KNOWLEDGE

our core group has been with us for more than 10+ years



QUALITY

certification, experience, training
- bringing highest standards



CONSTANT IMPROVEMENT

our workers participate in new certification training



CAREFUL SELECTION

potential hire needs to pass testing at our training facility



ALL-INCLUSIVE SERVICE

select, hire, mobilize, arrange logistics & process payroll



FLEXIBILITY

contract and permanent hires or last minute changes



PRICE

our rates are competitive and reflect your needs



EFFICIENCY

our references prove all projects were completed on time

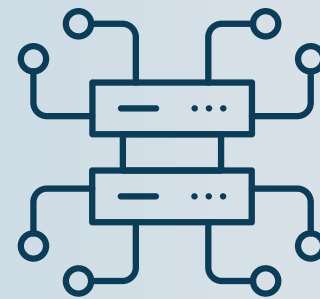
SECTORS



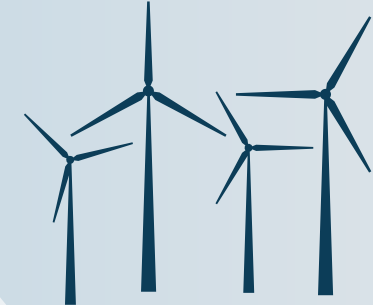
OFFSHORE



MARINE



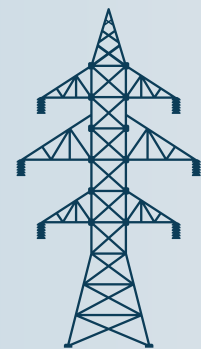
DATA CENTERS



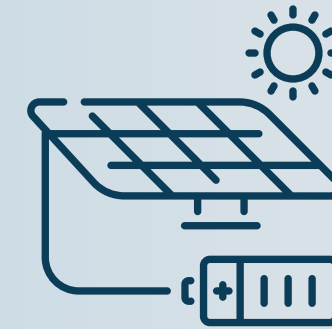
ONSHORE WIND



**BUILDING
CONSTRUCTION**

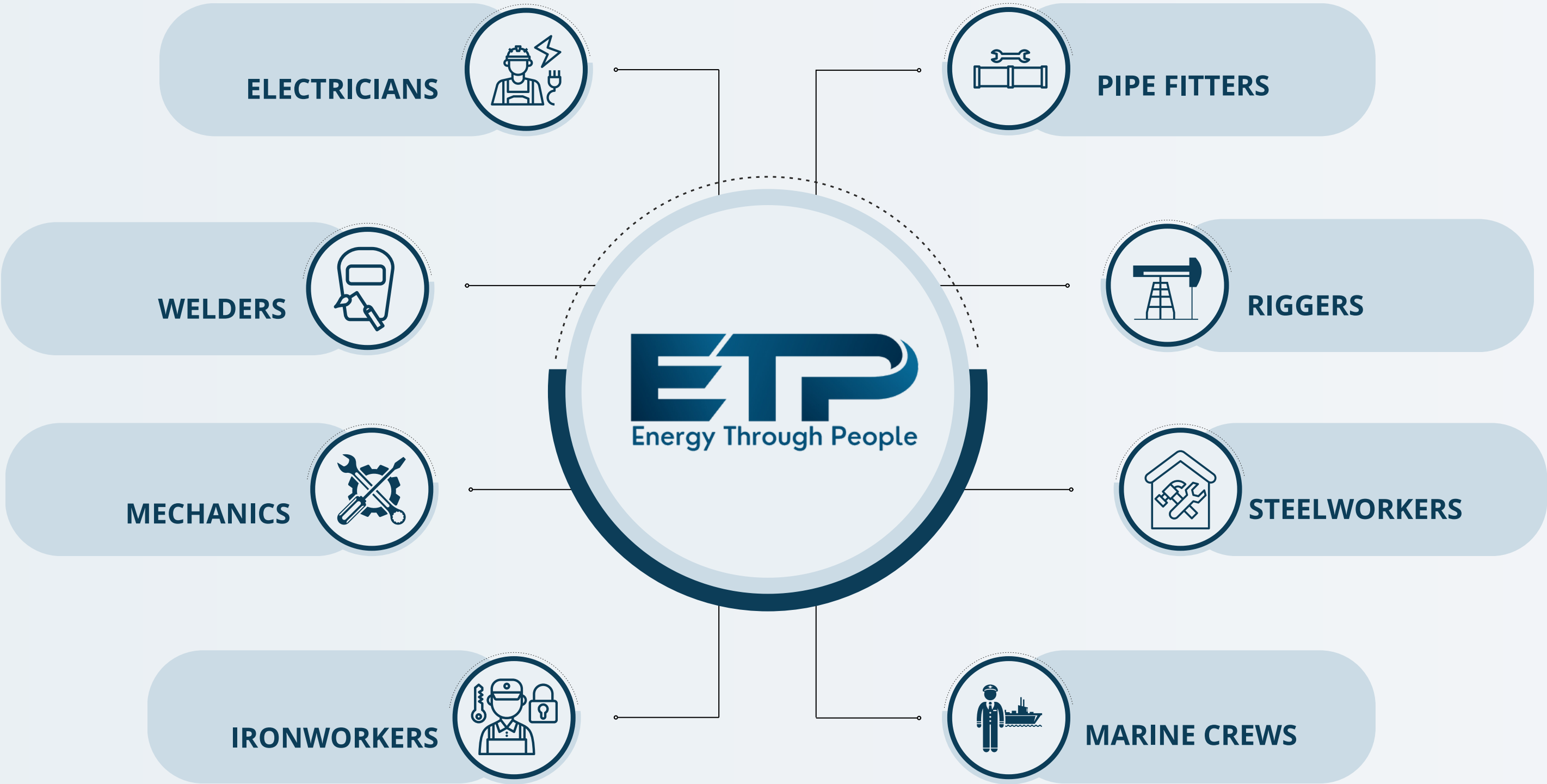


**POWER
TRANSMISSION &
DISTRIBUTION**



**SOLAR & BATTERY
STORAGE**

OUR WORKFORCE



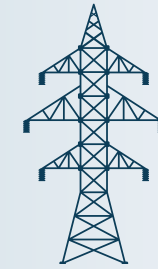
CASE STUDIES



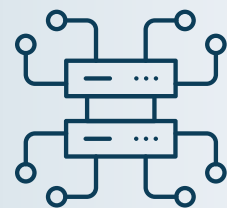
Name: **Offshore Platform Decomissioning**
Location: **Scotland**
Work: **Support in platform preparation phase, removal of electrical equipment, welding works**



Name: **RRS Sir David Attenborough vessel**
Location: **England**
Work: **Prefabrication & installation of pipes, welding works, cable & outlet placement, installation of electrical switchboard cabinets and equipment**



Name: **Power Grid Upgrade**
Location: **Holland**
Work: **Upgrade systems to a smart grid infrastructure; installation and integration of smart grid components, including smart meters, sensors, communication networks, and control systems.**



Name: **Microsoft Data Center**
Location: **Holland**
Work: **Electrical works, connecting, testing and commissioning of power generators, electrical inspections.**



Name: **Offshore Wind Farm**
Location: **Belgium**
Work: **Prefabrication of certain components, welding, cable routes placement, electrical cabinets connection.**

REFERENCES



“ETP company has been admitted as a solid partner fulfilling all technicians orders according to received technical specification. They are employing well skilled electricians with strong engagement and are fully responsible for job result. ETP deserve our respect as a professional partner in cooperation, that is able to cope with difficult problems and quickly meeting the customer’s requirements”

Kess de Jager

Chief Forman at Bakker Sliedrecht Electro Industrie B.V.



“We have known ETP as a professional, committed, trustworthy and flexible partner for installation support on our international Projects. ETP priority is to deliver quality personnel and a long-term relationship. A long relationship is all about trust, understanding and good communication, but also be honest when you are not able to deliver the intended quality. That is how we have known ETP.”

Guido Lems

Manager Service at Alewijnse



“I was thoroughly satisfied with the support provided by ETP over the course of the project. Their staff ensured that highly skilled workforce was delivered on site. They took care of all the logistics and all related issues. I was able to contact ETP at any stage during the project in order to share my questions or concerns which were always responded to and resolved in good time. I was impressed how efficiently ETP managed to provide solution for my project.”

Søren Andersen

Senior Project Manager based in Denmark



“ETP has been admitted as a solid partner fulfilling all technicians orders. They are employing well-skilled electricians and welders”

Michaela Süsser

Industrie & Schiffsmontagetechnik GmbH

CONTACT US

MACIEJ RAMOTOWSKI

Business Development Manager



+48 530 563 927



m.ramotowski@etpartners.pl



ul. Kielecka 2, 81-304 Gdynia



<https://energythroughpeople.com>

